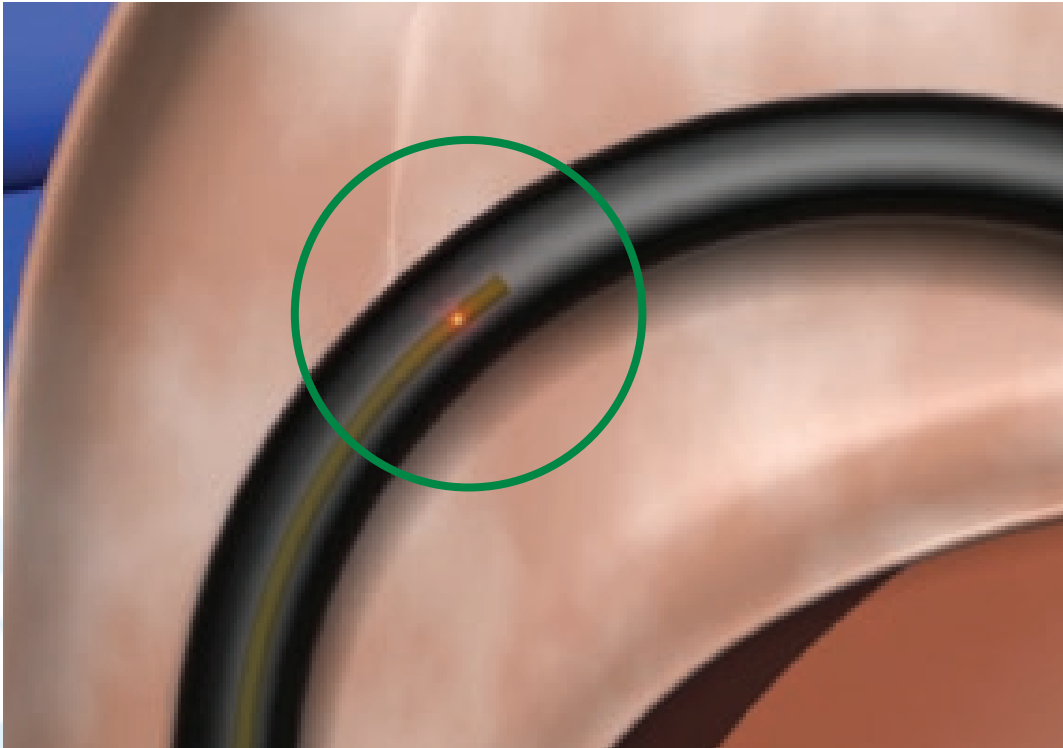


ScopeSafe™ Laser Fiber *and* ScopeGuardian™ Sheath

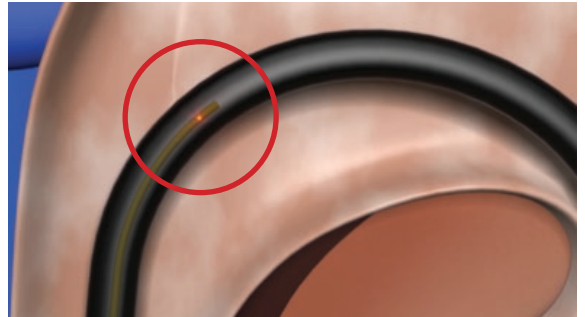


A better solution for
multiple laser fiber insertions

ScopeGuardian™

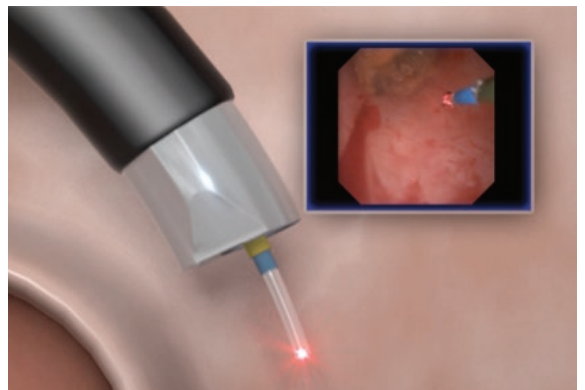
The ScopeGuardian Sheath enables laser fiber insertion through a deflected endoscope

- The traditional approach is to straighten the scope before passing a laser fiber however this can be difficult to achieve. In these cases the ScopeGuardian Sheath enables safe passage of the laser fiber through a deflected endoscope.



Whether your procedure requires single or multiple laser fiber insertions the ScopeGuardian Sheath protects your scope

- ScopeGuardian Sheath protects the full length of the endoscope's working channel from abrasions and scrapes that lead to punctures - a known cause of scope damage.
- ScopeGuardian Sheath protects your scope regardless of the number of fiber insertions your procedure demands.
- ScopeGuardian Sheath has minimal impact on deflection and flow due to micro thin-walled design.



UCI study conclusion, "The ScopeGuardian Sheath prevented mechanical working channel damage with minimal diminishment of deflection and irrigation flow".

Dr. J. Landman, title "Evaluation of Scope Guardian Sheath in Prevention of Ureteroscope endoluminal working channel damage".

ScopeSafe™

ScopeSafe laser fibers have a unique optical filter technology that protects the endoscope and laser from thermal damage

- The green ring shown on the NON-ScopeSafe fiber (Fig. B) represents errant laser energy in the cladding layer of the laser fiber - a known cause of fiber and scope damage.
- If the laser fiber is put on flexion and there is too much energy in the cladding both the laser fiber and scope can suffer major thermal damage.
- The optical filter (Fig. A) prevents laser energy from entering the fiber's cladding layer.
- ScopeSafe laser fibers also contain a built in blast shield to protect the laser's optics from damage.

Laser beam profile for ScopeSafe and non-ScopeSafe fibers.

A gaussian beam is desired since errant energy can cause spontaneous fiber failure and fiber breakage.

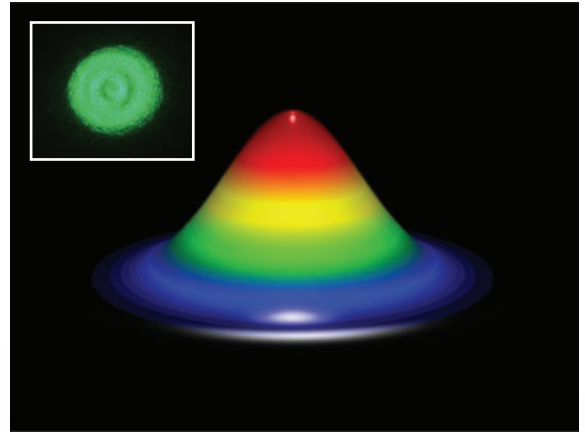


Fig. A: ScopeSafe laser fiber technology. No energy in the cladding.

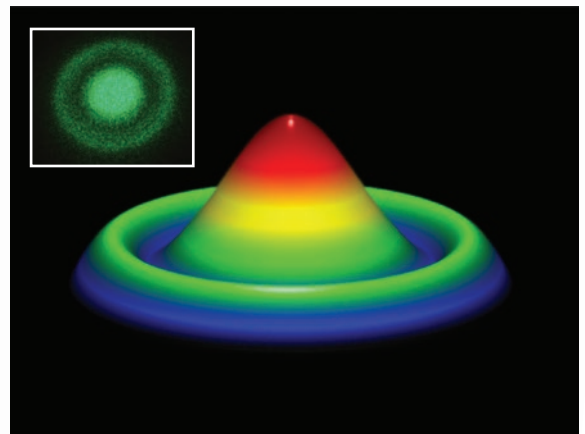


Fig. B: Competitor's laser fiber with energy in the cladding.

Best Flow Rates/Least Loss of Deflection

Royal Wolverhampton study conclusion, "The Optical Integrity ScopeSafe™ 200µm laser fibre offers the best overall performance with significantly improved flow rates and the least loss of scope deflection compared to the other fibers."

Nicholas J. Rukin et al, "What effect do different 200µm laser fibers have on deflection and irrigation flow rates during flexible ureterorenoscopy".

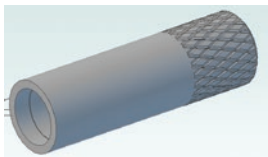
Product Specifications:

Fiber (Core) Size in Micrometers	ScopeSafe Laser Fiber Outer Diameter (Fr.)	ScopeGuardian Sheath Outer Diameter (Fr.)
200	1.1	1.5
272	1.3	1.6
300	1.4	1.7
365	1.7	-
550	2.3	-
940	4.2	-



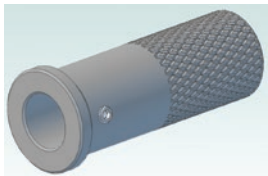
Ordering Information:

ScopeSafe Laser Fiber with ScopeGuardian Sheath, Slender Sleeve



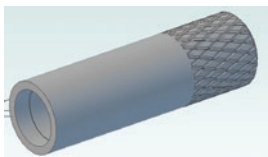
Part Number	Description
11141	200µm ScopeSafe laser fiber, SMA-905 with ScopeGuardian sheath, single-use, sterile
11143	272µm ScopeSafe laser fiber, SMA-905 with ScopeGuardian sheath, single-use, sterile
11145	300µm ScopeSafe laser fiber, SMA-905 with ScopeGuardian sheath, single-use, sterile

ScopeSafe Laser Fiber, Standard Sleeve



Part Number	Description
P0012-0200SS	200µm ScopeSafe laser fiber, SMA-905, single-use, sterile
P0012-0272SS	272µm ScopeSafe laser fiber, SMA-905, single-use, sterile
P0012-0300SS	300µm ScopeSafe laser fiber, SMA-905, single-use, sterile
P0012-0365	365µm ScopeSafe laser fiber, SMA-905, single-use, sterile
P0012-0550	550µm ScopeSafe laser fiber, SMA-905, single-use, sterile
P0012-1000	1000µm ScopeSafe laser fiber, SMA-905, single-use, sterile

ScopeSafe Laser Fiber, Slender Sleeve



Part Number	Description
11211	200µm ScopeSafe laser fiber, SMA-905, single-use, sterile
10560	272µm ScopeSafe laser fiber, SMA-905, single-use, sterile
10591	300µm ScopeSafe laser fiber, SMA-905, single-use, sterile
10548	365µm ScopeSafe laser fiber, SMA-905, single-use, sterile
10592	550µm ScopeSafe laser fiber, SMA-905, single-use, sterile
11213	1000µm ScopeSafe laser fiber, SMA-905, single-use, sterile

